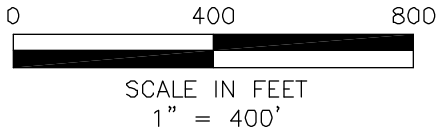
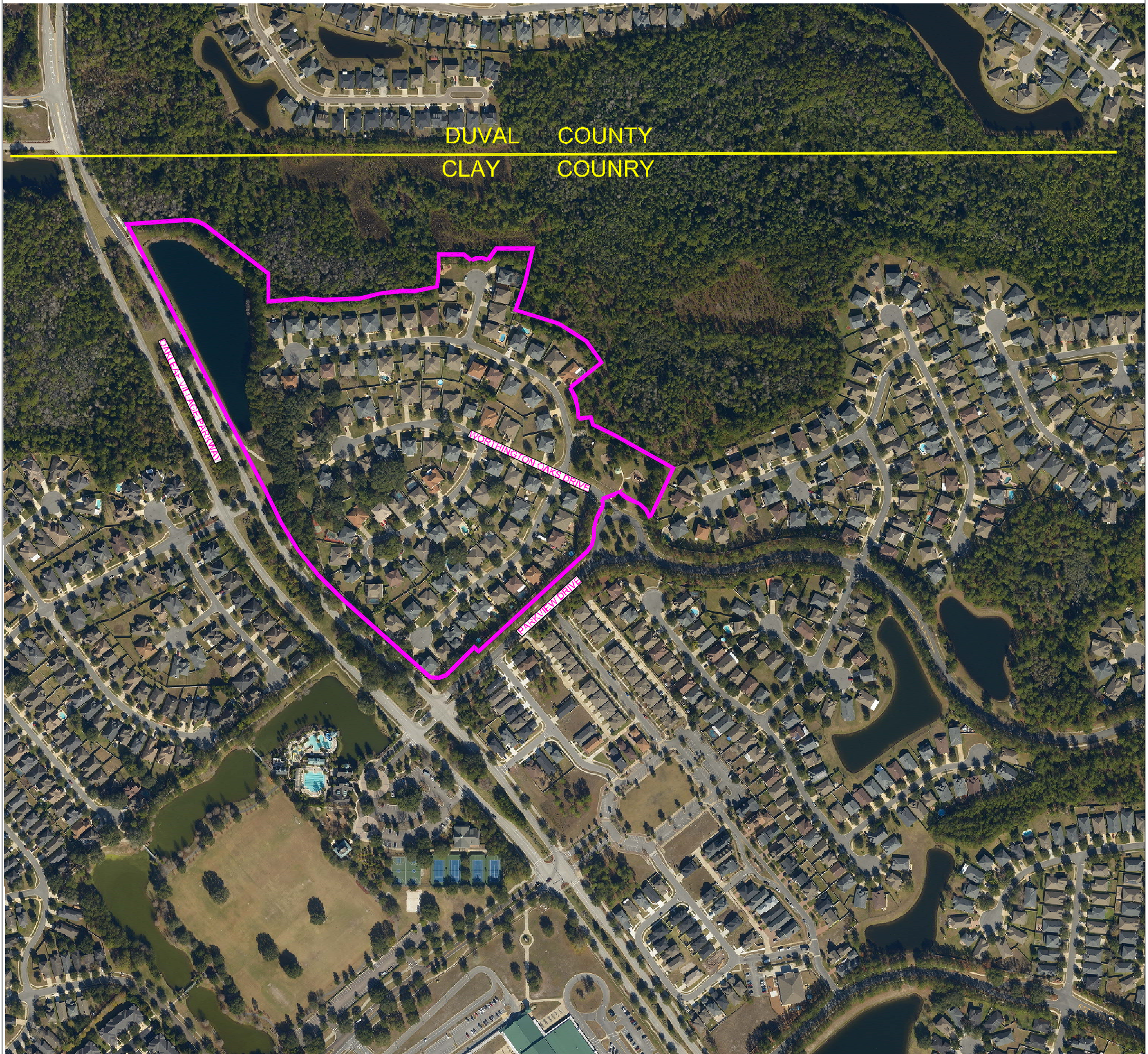


**MAP SHOWING LANDS MANAGED BY  
OAKLEAF PLANTATION PROPERTY OWNERS ASSOCIATION, INC.  
BEING  
WORTHINGTON OAKS OAKLEAF PLANTATION  
AS RECORDED IN PLAT BOOK 39 PAGES 52 THROUGH 60  
PUBLIC RECORDS OF CLAY COUNTY, FLORIDA**

(SEE INDEX SHEET FOR GENERAL LOCATION)



THIS MAP DOES NOT PURPORT TO BE A BOUNDARY SURVEY.



DUVAL COUNTY  
CLAY COUNTY

MAP SHOWS LANDS SUBJECT TO THE DECLARATION OF COVENANTS AND RESTRICTIONS FOR WORTHINGTON OAKS AT OAKLEAF PLANTATION, AND ALL AMENDMENTS AND SUPPLEMENTS THERETO, AS WELL AS LANDS SUBJECT TO THE DECLARATION OF COVENANTS AND RESTRICTIONS FOR WORTHINGTON OAKS AT OAKLEAF PLANTATION RESIDENTIAL LOTS, AND ALL AMENDMENTS AND SUPPLEMENTS THERETO, WHICH ARE ENFORCEABLE BY THE OAKLEAF PLANTATION PROPERTY OWNERS ASSOCIATION, INC.

**LD  
BRADLEY  
LAND SURVEYORS**  
*OLD WORLD KNOWLEDGE...NEW AGE TECHNOLOGY*

L. D. BRADLEY LAND SURVEYORS  
510 SOUTH 5TH STREET  
MACCLENNY, FLORIDA 32063  
PHONE (904) 786-6400 FAX (904) 786-1479  
LICENSED BUSINESS No. 6888

W.O. NO.:19039

MAP DATE: 02/07/19

DRAFTED BY: JLM

CHECKED BY: JLM

CAD FILE:19039

FB N/PG PG N/A