

A

Prepared by and return to: Bobby H. Glenn Clay Electric Cooperative, Inc. P. O. Box 308 Keystone Heights, Florida 32656

Book: 2303 Page: 1414 Rec: 12/11/2003 09:30 AM File# 200384327 James B. Jett Clerk Of Courts Clay County, FL FEE: \$19.50 DOC: \$0.70

Tax Parcel Number: 5-4-25-007868-000-00

RIGHT-OF-WAY EASEMENT Clay Electric Cooperative, Inc.

Natures Hammock at Oakleaf Plantation

Space above for recording data

GRANTORS, (whether singular or plural) OAKLEAF PLANTATION, L.L.C.

whose mailing address is 3020 Hartley Road, Suite 100

City Jacksonville State Florida Zip Code 32257

in Consideration of one dollar and other good and valuable Considerations, the receipt of which is hereby acknowledged, do(es) hereby grant, bargain, sell and convey to Clay Electric Cooperative, Inc., a Florida Corporation, of P.O. Box 308, Keystone Heights, Florida, 32656, hereinafter called the Cooperative, its successors and assigns, a perpetual easement as described feet in width over, under, upon and across the lands and real property situate, lying and being in the County of Clay, State of Florida, more particularly described as follows:

Non-exclusive easement ten (10) feet in width being parallel with, adjacent to and outside of the right of way lines of Canopy Oak Drive, Autumn Tree Lane, Wandering Oaks Drive, Drakefeather Drive, Misty Maple Court, Trellis Trail, Whispering Willow Way and Brook Hollow Court, including cul-de-sacs, over, under, upon and across LOT 1 THRU LOT 204, TRACT "A", TRACT "B", TRACT "F" AND TRACT "G" OF NATURES HAMMOCK at OAKLEAF PLANTATION as shown on the plat thereof as recorded in the public records of Clay County, Florida in Plat Book 43, at page 67 thru 79.

Together with easements ten (10) feet in width being five (5) feet each side of underground service cable extending from the above described easement areas to the consumer's point of connection.

NATURES HAMMOCK at OAKLEAF PLANTATION is a subdivision located in a portion of Section 5, Township 4 South, Range 25 East, Clay County, Florida and being more particularly described on reverse side and attached as Exhibit "A" and Exhibit "A-1". A facsimile of said NATURES HAMMOCK at OAKLEAF PLANTATION attached as Exhibit "B".

The right to construct, rebuild, operate, and maintain electric lines and systems on or under the above described lands; the right to inspect, repair, change, alter, improve, remove, and add to such facilities and systems as the Cooperative deems advisable, including, by way of example, and not by way of limitation, the right to alter, modify, increase or decrease the number and size of conduits, wires, voltage, poles, cables, down guys, transformers, transformer enclosures, regulators, and all necessarily related equipment; the right to cut, trim, remove, and control the growth of trees, shrubberies, and other plants in the easement area by all means available, and not prohibited by law, that may, in the judgement of the Cooperative, interfere with, threaten or endanger the operation and maintenance of the Cooperative's facilities and systems; the right to keep the easement clear of all buildings, structures or other obstructions except citrus trees and low-growing shrubbery that do not otherwise in the judgement of the Cooperative interfere with Cooperative's use of the easement and right-of-way; the right to license, permit, or otherwise agree to the joint use or occupancy of the easement, facilities or system whether over land or under ground by other utilities, persons, associations, or corporations, and the right to enter upon, cross, and use other lands of the Grantors to provide reasonable access to the easement granted herein. Grantor agrees that all equipment, poles, wire, facilities, and other tangible personal property, together with any other improvements to the easement and right-of-way installed by or on behalf of the Cooperative, shall remain the sole and exclusive property of the Cooperative, and shall not be subject to any interest or claim of Grantor. Grantor covenants with Grantee that he is lawfully seized of the land in fee simple, that he has good, right and lawful authority to grant, bargain, sell, and convey the land and the interest herein conveyed. Grantor reserves the right to use the underlying fee for farming, citrus grove, or pasture purposes, provided that such use shall not include the construction, placement or location of any structures in the easement area, nor any use that would, in the judgement of the Cooperative, interfere with the Cooperative's use and enjoyment of the easement. Grantor agrees that this right-of-way easement is perpetual and shall run with the land, and that any abandonment or interruption of the use of 'the easement and right-of-way shall not terminate or impair the interests hereby conveyed to the Cooperative.

IN WITNESS WHEREOF, the Grantors have hereunto affixed their hands and seals this 25 day of November 2003

SIGNED, SEALED AND DELIVERED IN THE PRESENCE OF:

OAKLEAF PLANTATION, L.L.C. a Florida Limited Liability Company

First, Witness Signature: Elinore C. Cox Also, Type/Print Name: ELINORE C. COX

By: Erik H. Wilson (seal) Type/Print Name and Title: ERIK H. WILSON, VICE PRESIDENT (seal)

Second, Witness Signature: Deborah H. Dunbar Also, Type/Print Name: Deborah H. Dunbar

Attest: (seal) Type/Print Name and Title: (seal)

STATE OF Florida COUNTY OF Duval

The foregoing instrument was acknowledged before me this 25 day of November 2003

By ERIK H. WILSON, VICE PRESIDENT OF OAKLEAF PLANTATION, L.L.C. (Name of officer, partner or agent, and title, one or more) (Name of corporation or partnership acknowledging)

a Florida limited liability company, on behalf of the company. He/she is personally known to me or produced

as identification and did not take an oath. (Type of identification)

(Signature): Deborah H. Dunbar Notary Public Also, Type/Print Name: Deborah H. Dunbar

(Notary Seal)

Commission Expires: DEBORAH H. DUNBAR Commission No.

CAPTION :

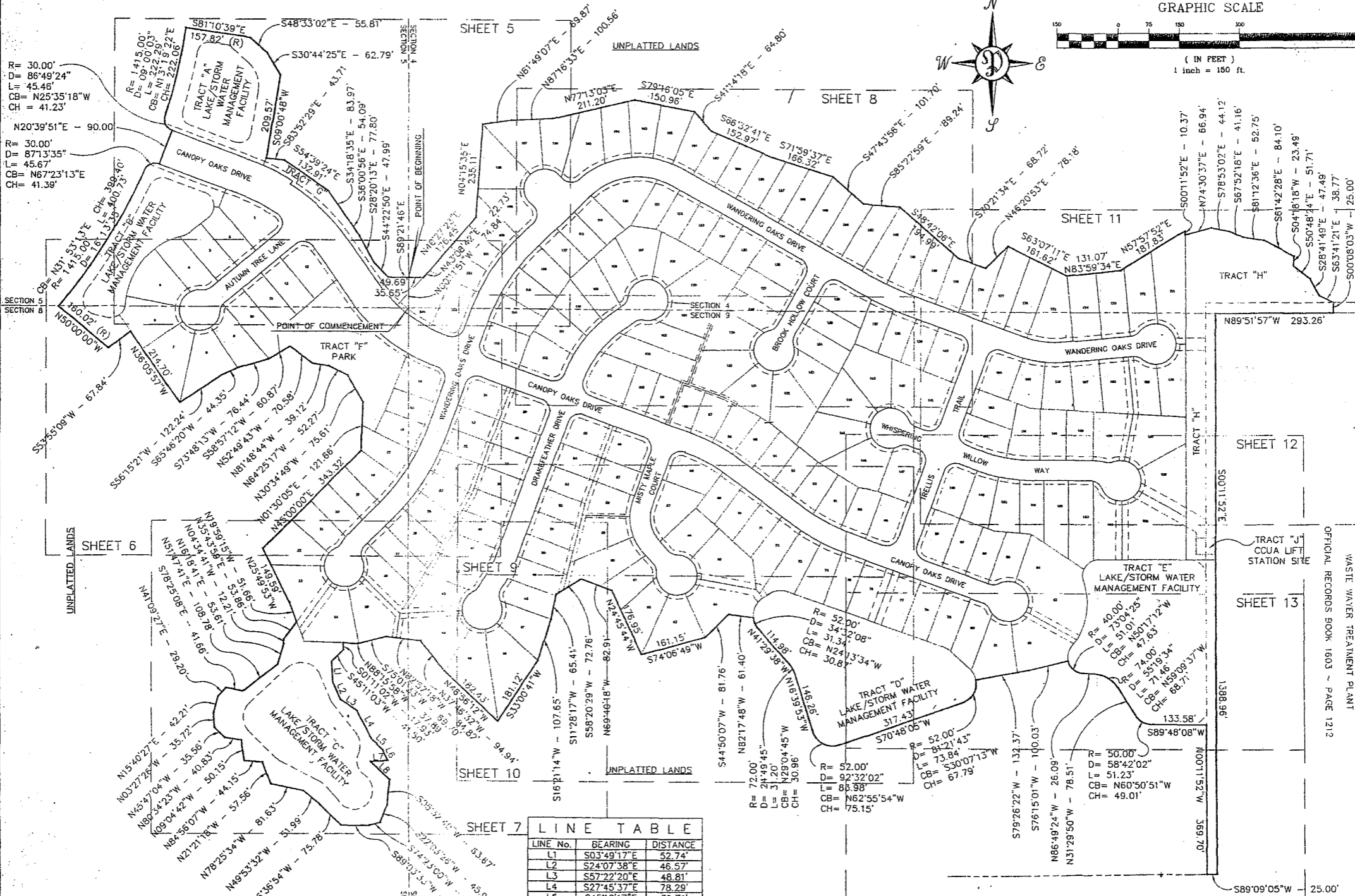
A PARCEL OF LAND LYING IN AND BEING PART OF SECTION 4, SECTION 5, SECTION 8 AND SECTION 9, TOWNSHIP 4 SOUTH, RANGE 25 EAST, CLAY COUNTY, FLORIDA, BEING MORE PARTICULARLY DESCRIBED AS FOLLOWS:

COMMENCING AT THE SOUTHWEST CORNER OF SAID SECTION 4; THENCE, ON THE WEST LINE THEREOF, ALSO BEING THE EAST LINE OF SAID SECTION 5, NORTH 00 DEGREES 11 MINUTES 51 SECONDS WEST, 74.84 FEET TO THE POINT OF BEGINNING; THENCE, SOUTH 89 DEGREES 21 MINUTES 46 SECONDS EAST, 35.65 FEET; THENCE, NORTH 43 DEGREES 08 MINUTES 42 SECONDS EAST, 22.73 FEET; THENCE, NORTH 40 DEGREES 27 MINUTES 23 SECONDS EAST, 176.45 FEET; THENCE, NORTH 04 DEGREES 15 MINUTES 35 SECONDS EAST, 235.11 FEET; THENCE, NORTH 81 DEGREES 49 MINUTES 07 SECONDS EAST, 69.87 FEET; THENCE, NORTH 87 DEGREES 16 MINUTES 33 SECONDS EAST, 100.56 FEET; THENCE, NORTH 77 DEGREES 13 MINUTES 03 SECONDS EAST, 211.20 FEET; THENCE, SOUTH 79 DEGREES 16 MINUTES 05 SECONDS EAST, 150.96 FEET; THENCE, SOUTH 41 DEGREES 14 MINUTES 18 SECONDS EAST, 64.80 FEET; THENCE, SOUTH 66 DEGREES 32 MINUTES 41 SECONDS EAST, 152.97 FEET; THENCE, SOUTH 71 DEGREES 59 MINUTES 37 SECONDS EAST, 166.32 FEET; THENCE, SOUTH 47 DEGREES 43 MINUTES 56 SECONDS EAST, 101.70 FEET; THENCE, SOUTH 85 DEGREES 22 MINUTES 59 SECONDS EAST, 89.24 FEET; THENCE, SOUTH 48 DEGREES 42 MINUTES 06 SECONDS EAST, 194.99 FEET; THENCE, SOUTH 70 DEGREES 21 MINUTES 34 SECONDS EAST, 68.72 FEET; THENCE, NORTH 46 DEGREES 20 MINUTES 53 SECONDS EAST, 78.18 FEET; THENCE, SOUTH 63 DEGREES 07 MINUTES 11 SECONDS EAST, 161.62 FEET; THENCE, NORTH 83 DEGREES 59 MINUTES 34 SECONDS EAST, 131.07 FEET; THENCE, NORTH 57 DEGREES 57 MINUTES 52 SECONDS EAST, 187.83 FEET; THENCE, SOUTH 00 DEGREES 11 MINUTES 52 SECONDS EAST, 10.37 FEET; THENCE, NORTH 74 DEGREES 30 MINUTES 37 SECONDS EAST, 66.94 FEET; THENCE, SOUTH 78 DEGREES 53 MINUTES 02 SECONDS EAST, 44.12 FEET; THENCE, SOUTH 67 DEGREES 52 MINUTES 18 SECONDS EAST, 41.16 FEET; THENCE, SOUTH 81 DEGREES 12 MINUTES 36 SECONDS EAST, 52.75 FEET; THENCE, SOUTH 61 DEGREES 42 MINUTES 28 SECONDS EAST, 84.10 FEET; THENCE, SOUTH 04 DEGREES 18 MINUTES 18 SECONDS WEST, 23.49 FEET; THENCE, SOUTH 50 DEGREES 48 MINUTES 24 SECONDS EAST, 51.71 FEET; THENCE, SOUTH 28 DEGREES 41 MINUTES 49 SECONDS EAST, 47.49 FEET; THENCE, SOUTH 63 DEGREES 41 MINUTES 21 SECONDS EAST, 38.77 FEET; THENCE, SOUTH 00 DEGREES 08 MINUTES 03 SECONDS WEST, 25.00 FEET; THENCE, NORTH 89 DEGREES 51 MINUTES 57 SECONDS WEST, 293.26 FEET; THENCE, SOUTH 00 DEGREES 11 MINUTES 52 SECONDS EAST, 1388.96 FEET; THENCE, SOUTH 89 DEGREES 09 MINUTES 05 SECONDS WEST, 25.00 FEET; THENCE, NORTH 00 DEGREES 11 MINUTES 52 SECONDS WEST, 369.70 FEET; THENCE, SOUTH 89 DEGREES 48 MINUTES 08 SECONDS WEST, 133.58 FEET TO A POINT OF CURVATURE; THENCE, AROUND AND ALONG A CURVE TO THE RIGHT HAVING A RADIUS OF 50.00 FEET AND A CENTRAL ANGLE OF 58 DEGREES 42 MINUTES 02 SECONDS, AN ARC DISTANCE OF 51.23 FEET (NORTH 60 DEGREES 50 MINUTES 51 SECONDS WEST, 49.01 FEET, CHORD BEARING AND DISTANCE) TO A POINT OF TANGENCY; THENCE, NORTH 31 DEGREES 29 MINUTES 50 SECONDS WEST, 78.51 FEET TO A POINT OF CURVATURE; THENCE, AROUND AND ALONG A CURVE TO THE LEFT HAVING A RADIUS OF 74.00 FEET AND A CENTRAL ANGLE OF 55 DEGREES 19 MINUTES 34 SECONDS, AN ARC DISTANCE OF 71.46 FEET (NORTH 59 DEGREES 09 MINUTES 37 SECONDS WEST, 68.71 FEET, CHORD BEARING AND DISTANCE) TO A POINT OF TANGENCY; THENCE, NORTH 86 DEGREES 49 MINUTES 24 SECONDS WEST, 26.09 FEET TO A POINT OF CURVATURE; THENCE, AROUND AND ALONG A CURVE TO THE RIGHT HAVING A RADIUS OF 40.00 FEET AND A CENTRAL ANGLE OF 73 DEGREES 04 MINUTES 25 SECONDS, AN ARC DISTANCE OF 51.01 FEET (NORTH 50 DEGREES 17 MINUTES 12 SECONDS WEST, 47.63 FEET, CHORD BEARING AND DISTANCE) TO A POINT ON SAID CURVE; THENCE, SOUTH 76 DEGREES 15 MINUTES 01 SECONDS WEST, 100.03 FEET; THENCE, SOUTH 79 DEGREES 26 MINUTES 22 SECONDS WEST, 132.37 FEET TO A POINT ON A CURVE; THENCE, AROUND AND ALONG A CURVE TO THE RIGHT, HAVING A RADIUS OF 52.00 FEET AND A CENTRAL ANGLE OF 81 DEGREES 21 MINUTES 43 SECONDS, AN ARC DISTANCE OF 73.84 FEET (SOUTH 30 DEGREES 07 MINUTES 13 SECONDS WEST, 67.79 FEET, CHORD BEARING AND DISTANCE) TO A POINT OF TANGENCY; THENCE, SOUTH 70 DEGREES 48 MINUTES 05 SECONDS WEST, 317.43 FEET TO A POINT OF CURVATURE; THENCE, AROUND AND ALONG A CURVE TO THE RIGHT HAVING A RADIUS OF 52.00 FEET AND A CENTRAL ANGLE OF 92 DEGREES 32 MINUTES 02 SECONDS, AN ARC DISTANCE OF 83.98 FEET (NORTH 62 DEGREES 55 MINUTES 54 SECONDS WEST, 75.15 FEET, CHORD BEARING AND DISTANCE) TO A POINT OF TANGENCY; THENCE, NORTH 16 DEGREES 39 MINUTES 53 SECONDS WEST, 146.26 FEET TO A POINT OF CURVATURE; THENCE, AROUND AND ALONG A CURVE TO THE LEFT HAVING A RADIUS OF 72.00 FEET AND A CENTRAL ANGLE OF 24 DEGREES 49 MINUTES 45 SECONDS, AN ARC DISTANCE OF 31.20 FEET (NORTH 29 DEGREES 04 MINUTES 45 SECONDS WEST, 30.96 FEET, CHORD BEARING AND DISTANCE) TO A POINT OF TANGENCY; THENCE, NORTH 41 DEGREES 29 MINUTES 38 SECONDS WEST, 114.98 FEET TO A POINT OF CURVATURE; THENCE, AROUND AND ALONG A CURVE TO THE RIGHT HAVING A RADIUS OF 52.00 FEET AND A CENTRAL ANGLE OF 34 DEGREES 32 MINUTES 08 SECONDS, AN ARC DISTANCE OF 31.34 FEET (NORTH 24 DEGREES 13 MINUTES 34 SECONDS WEST, 30.87 FEET, CHORD BEARING AND DISTANCE) TO A POINT ON SAID CURVE; THENCE, NORTH 82 DEGREES 17 MINUTES 48 SECONDS WEST, 61.40 FEET; THENCE, SOUTH 44 DEGREES 50 MINUTES 07 SECONDS WEST, 81.76 FEET; THENCE, SOUTH 74 DEGREES 06 MINUTES 49 SECONDS WEST, 161.15 FEET; THENCE, NORTH 24 DEGREES 45 MINUTES 44 SECONDS WEST, 176.95 FEET; THENCE, NORTH 69 DEGREES 40 MINUTES 18 SECONDS WEST, 82.91 FEET; THENCE, SOUTH 58 DEGREES 20 MINUTES 29 SECONDS WEST, 72.76 FEET; THENCE, SOUTH 11 DEGREES 28 MINUTES 17 SECONDS WEST, 65.41 FEET; THENCE, SOUTH 16 DEGREES 21 MINUTES 14 SECONDS WEST, 107.65 FEET; THENCE, SOUTH 33 DEGREES 00 MINUTES 41 SECONDS WEST, 181.12 FEET; THENCE, NORTH 46 DEGREES 56 MINUTES 12 SECONDS WEST, 182.43 FEET; THENCE, NORTH 37 DEGREES 46 MINUTES 32 SECONDS WEST, 94.94 FEET; THENCE, NORTH 82 DEGREES 57 MINUTES 18 SECONDS WEST, 84.82 FEET; THENCE, SOUTH 75 DEGREES 01 MINUTES 33 SECONDS WEST, 69.70 FEET; THENCE, NORTH 88 DEGREES 15 MINUTES 58 SECONDS WEST, 37.89 FEET; THENCE, SOUTH 01 DEGREES 11 MINUTES 02 SECONDS WEST, 17.93 FEET; THENCE, SOUTH 45

DEGREES 11 MINUTES 03 SECONDS WEST, 41.50 FEET; THENCE, SOUTH 03 DEGREES 49 MINUTES 17 SECONDS EAST, 52.74 FEET; THENCE, SOUTH 24 DEGREES 07 MINUTES 38 SECONDS EAST, 46.57 FEET; THENCE, SOUTH 57 DEGREES 22 MINUTES 20 SECONDS EAST, 48.81 FEET; THENCE, SOUTH 27 DEGREES 45 MINUTES 37 SECONDS EAST, 78.29 FEET; THENCE, SOUTH 45 DEGREES 18 MINUTES 17 SECONDS EAST, 39.71 FEET; THENCE, SOUTH 25 DEGREES 58 MINUTES 44 SECONDS EAST, 28.90 FEET; THENCE, SOUTH 86 DEGREES 43 MINUTES 06 SECONDS WEST, 42.79 FEET; THENCE, SOUTH 46 DEGREES 38 MINUTES 39 SECONDS EAST, 64.47 FEET; THENCE, SOUTH 05 DEGREES 32 MINUTES 40 SECONDS WEST, 63.67 FEET; THENCE, SOUTH 22 DEGREES 03 MINUTES 26 SECONDS WEST, 45.97 FEET; THENCE, SOUTH 74 DEGREES 23 MINUTES 00 SECONDS WEST, 25.68 FEET; THENCE, SOUTH 89 DEGREES 03 MINUTES 33 SECONDS WEST, 71.78 FEET; THENCE, NORTH 46 DEGREES 36 MINUTES 54 SECONDS WEST, 75.78 FEET; THENCE, NORTH 49 DEGREES 53 MINUTES 32 SECONDS WEST, 51.99 FEET; THENCE, NORTH 78 DEGREES 25 MINUTES 34 SECONDS WEST, 81.63 FEET; THENCE, NORTH 21 DEGREES 21 MINUTES 18 SECONDS WEST, 57.56 FEET; THENCE, NORTH 84 DEGREES 56 MINUTES 07 SECONDS WEST, 44.15 FEET; THENCE, NORTH 09 DEGREES 04 MINUTES 42 SECONDS WEST, 50.15 FEET; THENCE, NORTH 80 DEGREES 34 MINUTES 23 SECONDS WEST, 40.83 FEET; THENCE, NORTH 45 DEGREES 47 MINUTES 04 SECONDS WEST, 35.56 FEET; THENCE, NORTH 03 DEGREES 27 MINUTES 26 SECONDS WEST, 35.72 FEET; THENCE, NORTH 15 DEGREES 40 MINUTES 27 SECONDS EAST, 42.21 FEET; THENCE, NORTH 41 DEGREES 09 MINUTES 27 SECONDS EAST, 29.20 FEET; THENCE, SOUTH 78 DEGREES 25 MINUTES 08 SECONDS EAST, 41.66 FEET; THENCE, NORTH 51 DEGREES 47 MINUTES 41 SECONDS EAST, 108.78 FEET; THENCE, NORTH 16 DEGREES 18 MINUTES 41 SECONDS EAST, 53.61 FEET; THENCE, NORTH 04 DEGREES 34 MINUTES 41 SECONDS WEST, 12.21 FEET; THENCE, NORTH 35 DEGREES 43 MINUTES 59 SECONDS EAST, 53.86 FEET; THENCE, NORTH 19 DEGREES 59 MINUTES 15 SECONDS WEST, 51.66 FEET; THENCE, NORTH 25 DEGREES 49 MINUTES 53 SECONDS WEST, 149.59 FEET; THENCE, NORTH 45 DEGREES 00 MINUTES 00 SECONDS EAST, 343.32 FEET; THENCE, NORTH 01 DEGREES 30 MINUTES 05 SECONDS EAST, 121.66 FEET; THENCE, NORTH 30 DEGREES 34 MINUTES 49 SECONDS WEST, 75.61 FEET; THENCE, NORTH 64 DEGREES 25 MINUTES 17 SECONDS WEST, 52.27 FEET; THENCE, NORTH 81 DEGREES 48 MINUTES 44 SECONDS WEST, 39.12 FEET; THENCE, NORTH 52 DEGREES 49 MINUTES 43 SECONDS WEST, 70.58 FEET; THENCE, SOUTH 58 DEGREES 57 MINUTES 12 SECONDS WEST, 60.87 FEET; THENCE, SOUTH 73 DEGREES 48 MINUTES 13 SECONDS WEST, 76.44 FEET; THENCE, SOUTH 65 DEGREES 46 MINUTES 20 SECONDS WEST, 44.35 FEET; THENCE, SOUTH 56 DEGREES 15 MINUTES 21 SECONDS WEST, 122.24 FEET; THENCE, NORTH 36 DEGREES 05 MINUTES 57 SECONDS WEST, 214.70 FEET; THENCE, SOUTH 53 DEGREES 55 MINUTES 09 SECONDS WEST, 67.84 FEET; THENCE, RADIAL TO A CURVE, NORTH 50 DEGREES 00 MINUTES 00 SECONDS WEST, 160.02 FEET TO A POINT ON SAID CURVE; THENCE, AROUND AND ALONG A CURVE TO THE LEFT, HAVING A RADIUS OF 1415.00 FEET AND A CENTRAL ANGLE OF 16 DEGREES 13 MINUTES 35 SECONDS, AN ARC DISTANCE OF 400.73 FEET (NORTH 31 DEGREES 53 MINUTES 13 SECONDS EAST, 399.40 FEET, CHORD BEARING AND DISTANCE) TO A POINT OF REVERSE CURVE; THENCE, AROUND AND ALONG A CURVE TO THE RIGHT HAVING A RADIUS OF 30.00 FEET AND A CENTRAL ANGLE OF 87 DEGREES 13 MINUTES 35 SECONDS, AN ARC DISTANCE OF 45.67 FEET (NORTH 67 DEGREES 23 MINUTES 13 SECONDS EAST, 41.39 FEET, CHORD BEARING AND DISTANCE) TO A POINT ON SAID CURVE; THENCE, NORTH 20 DEGREES 39 MINUTES 51 SECONDS EAST, 90.00 FEET TO A POINT ON A CURVE; THENCE, AROUND AND ALONG A CURVE TO THE RIGHT, HAVING A RADIUS OF 30.00 FEET AND A CENTRAL ANGLE OF 86 DEGREES 49 MINUTES 24 SECONDS, AN ARC DISTANCE OF 45.46 FEET (NORTH 25 DEGREES 35 MINUTES 18 SECONDS WEST, 41.23 FEET, CHORD BEARING AND DISTANCE) TO A POINT OF REVERSE CURVE; THENCE, AROUND AND ALONG A CURVE TO THE LEFT HAVING A RADIUS OF 1415.00 FEET AND A CENTRAL ANGLE OF 09 DEGREES 00 MINUTES 03 SECONDS, AN ARC DISTANCE OF 222.29 FEET (NORTH 13 DEGREES 19 MINUTES 23 SECONDS EAST, 222.06 FEET, CHORD BEARING AND DISTANCE) TO A POINT ON SAID CURVE; THENCE, RADIAL TO LAST SAID CURVE, SOUTH 81 DEGREES 10 MINUTES 39 SECONDS EAST, 157.82 FEET; THENCE, SOUTH 48 DEGREES 33 MINUTES 02 SECONDS EAST, 55.81 FEET; THENCE, SOUTH 30 DEGREES 44 MINUTES 25 SECONDS EAST, 62.79 FEET; THENCE, SOUTH 09 DEGREES 00 MINUTES 48 SECONDS WEST, 209.57 FEET; THENCE, SOUTH 83 DEGREES 52 MINUTES 29 SECONDS EAST, 43.71 FEET; THENCE, SOUTH 54 DEGREES 39 MINUTES 24 SECONDS EAST, 132.91 FEET; THENCE, SOUTH 34 DEGREES 18 MINUTES 35 SECONDS EAST, 83.97 FEET; THENCE, SOUTH 36 DEGREES 00 MINUTES 56 SECONDS EAST, 54.09 FEET; THENCE, SOUTH 28 DEGREES 20 MINUTES 13 SECONDS EAST, 77.80 FEET; THENCE, SOUTH 44 DEGREES 22 MINUTES 50 SECONDS EAST, 47.99 FEET; THENCE, SOUTH 89 DEGREES 21 MINUTES 46 SECONDS EAST, 49.69 FEET TO THE POINT OF BEGINNING. CONTAINING 71.42 ACRES, MORE OR LESS.

NATURE'S HAMMOCK AT OAKLEAF PLANTATION

PART OF SECTION 4, SECTION 5, SECTION 8 AND SECTION 9, TOWNSHIP 4 SOUTH, RANGE 25 EAST, CLAY COUNTY, FLORIDA



OR Book 2303 page 1417

LINE No.	BEARING	DISTANCE
L1	S03°49'17"E	52.74'
L2	S24°07'38"E	46.57'
L3	S57°22'20"E	48.81'
L4	S27°45'37"E	78.29'
L5	S45°18'17"E	39.71'
L6	S25°58'44"E	28.90'
L7	S86°43'06"W	42.79'
L8	S46°18'10"E	64.47'

PERRET AND ASSOCIATES, INC.

1614 ATLANTIC-UNIVERSITY CIRQUE, JACKSONVILLE, FLORIDA 32207

EXHIBIT "B"

WASTE WATER TREATMENT PLANT
OFFICIAL RECORDS BOOK 1603 ~ PAGE 1212